

Sixth Form Prospectus



St. Aldhelm's Academy



An Academy aspiring
to the highest
standards of achievement



Access to a flexible and personalised curriculum to enable progression...

Continuing Education: A pathway to provide short courses or taster sessions to develop both vocational and life skills, and progress onto Introductory Vocational courses.

Introductory Vocational: A pathway to study and achieve a level 2 vocational qualification to provide access to Advanced Vocational courses or employment.

Advanced Vocational: A pathway that offers a wide range of vocational level 2 and level 3 courses that give access to employment or further/higher education.

Sports Academy: An opportunity for gifted and talented young adults in the field of sport to develop their skills and fitness levels through sessions led by professional coaches.

Enrichment: The Academy will provide opportunities for personal development through extra activities delivered within a community environment and with 1:1 support from a mentor.





A welcome from the Principal

Welcome to St. Aldhelm's Academy Sixth Form, a centre of excellence, where innovative learning and teaching and traditional values, go hand in hand within a caring, supportive Christian Ethos.

We are currently in the process of redeveloping our Academy's Sixth Form Curriculum to meet the wider needs of our catchment and surrounding area. The launch of our new Sixth Form within the Academy in September 2011, will see a new tailored curriculum to meet the needs of our young adults by offering flexible learning hours, additional BTEC and vocational courses in Sport, Hair and Beauty, Landbased studies, Construct & Build, Media studies and key life skills, along with a dedicated Mentor for 1 to 1 support.

We will also be encouraging our young adults to develop their leadership skills through our Community Enrichment Programme which will entail organising charitable events, volunteering, fundraising and offering support services to those more vulnerable in the community.

Our aim is to create a centre of excellence for lifelong learning that will be at the heart of the community and deliver a personalised programme to enable the best outcomes for our young adult's future.

I look forward to meeting with parents, carers and young adults at one of our Sixth Form Open Evenings in the coming months.

Cheryl Heron

A welcome from the Sponsors

We want the best for the young people of the area, and our partnership is committed to innovation and excellence in learning and teaching.

Our vision is that young people should have the fullest access to learning and all the opportunities that follow.

The Church of England has been working with communities to establish and develop schools for more than 200 years, and Bournemouth University wants each young person to take their education as far as possible as well as bringing its special expertise in Sport and Mathematics. Our shared ambition is to raise young people's expectations about their future learning and career paths. We want to build strong relationships with you and the community.



Chris Shepperd
Director of Education,
Diocese of Salisbury,
Church of England



David Ball
Head of Academic
Development Services
Bournemouth University



Sixth Form Vision Statement

To be the Centre of Excellence for all young adults aged 16-19 years within the local and surrounding area; delivering the highest level of academic qualifications and vocational training within a caring and loving environment based on our christian values, maximising potential to aspire and achieve and inspire lifelong learning.

Continuing Education

Taster Course

This is a pre-foundation course which has been developed to provide young adults with a 'taster' of the variety of vocational courses available at the Academy's Sixth Form which they may not have previously experienced.

Each of the subjects listed below will be delivered on a 'one week - one subject' basis, allowing all seven subjects to be explored along with the core subjects; literacy, numeracy and life skills. Individual learning programmes will be completed at the start of the course to help identify the young adults existing strengths and needs and incorporate any additional support required. The young adult will gain valuable insight into specific vocations and it will help to clarify whether they would like to progress onto the 'Introductory Vocational' pathway or perhaps find employment, or an apprenticeship.

This is a 9 week course and will start at the end of the summer term (June) and run for the duration of the summer holiday. The St. Aldhelm's Academy Achievement Certificate will be awarded on completion of the course.

Subjects available:

- Catering
- Sport/Health Studies
- Land based studies
- Drama
- Independent Living Skills
- Information Technology
- Art and design

Access Course

This is a level 1 foundation course and has been developed to provide a 12 week accredited programme for young adults who wish to learn and develop key life skills in preparation for adult life, and to help make a more informed choice of whether to study further on the 'Introductory Vocational' pathway, or use as a stepping stone to employment and/or training.

The subjects below will be covered in a flexible timetable and will run three times a year, throughout the academic year. An ALAN accredited certificate will be awarded on completion of the course.

- Literacy
- Numeracy
- Budget handling
- Independent practical based living skills (Ironing, Sewing, Basic Maintenance, Cooking) Certificate for evidence from Tutor
- Applications for education/employment
- Accredited Certificate in skills toward enabling progression
- Leadership skills qualification

Introductory Vocational

The Introductory Vocational pathway will give young adults the chance to gain accreditation at level 2 in one of our excellent vocational areas; if you have grades at GCSE (D - F) or are progressing from an foundation level certificate (Access Course).

Courses will last one year with a view to progress on to Level 3, Advanced Vocational, or enhance job prospects.

The following subjects are available and will be delivered subject to demand:

- Public Services qualification
- Construction
- Land Based Studies
- IT at Work
- Travel & Tourism
- Sport & Leisure
- Applied Science
- L2 BTEC Science, Technology, Engineering and Maths (STEM) leadership skills

Alongside vocational studies the young adult will work to improve their competencies in Numeracy, Communication and IT, further developing their personal skills.

Groups are usually small and are often supported by Specialist Learning Assistants as well as Tutors. One to One support will be provided to specifically identified candidates.

In the second term of the course a minimum 2 week work placement will be undertaken to develop practical experience in their chosen area.



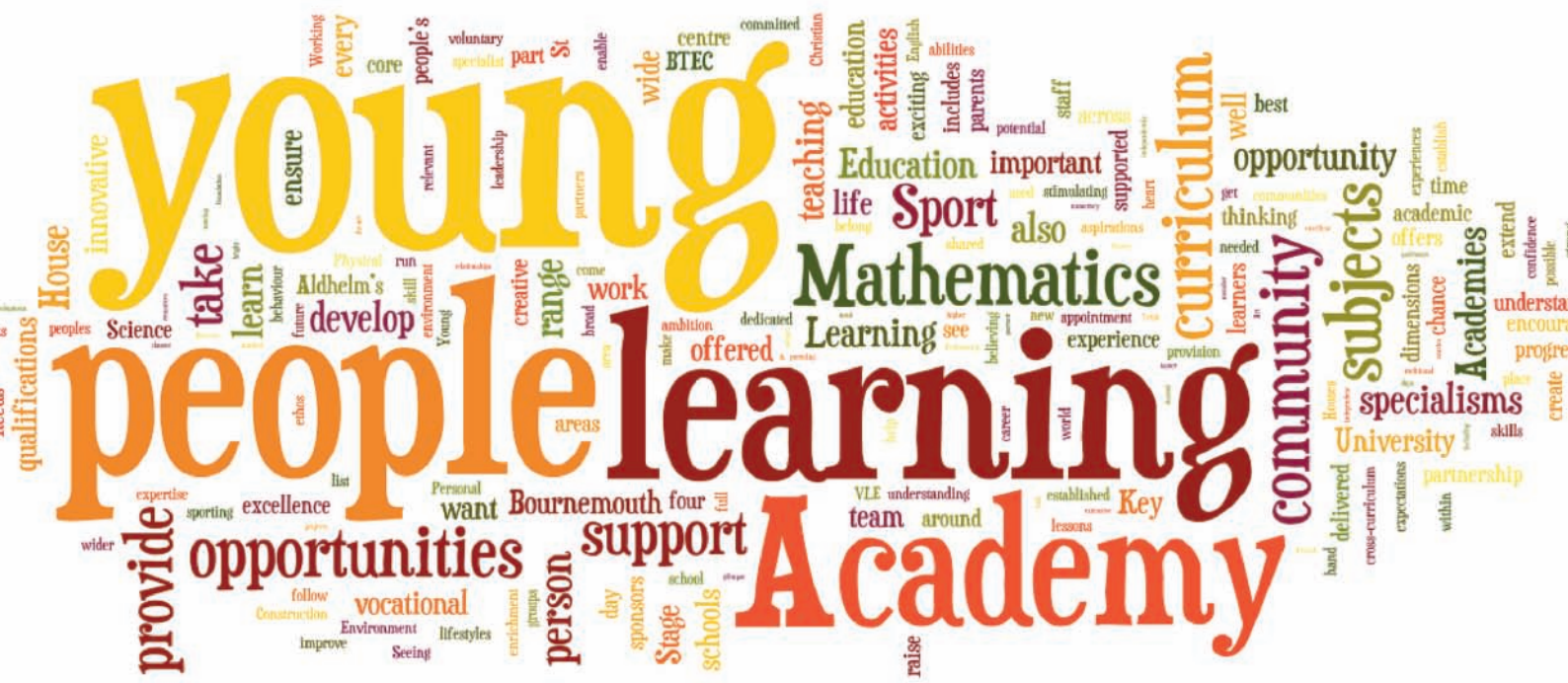
Advanced Vocational

The level 3 Advanced Vocational pathway allows you to focus on the career area of your choice and develop the knowledge and skills that employers will be looking for. You will have the chance to choose a course that suits your skills and strengths and enhance your future prospects or which will enable you to study at higher education level. You will need 4 GCSE passes at grade C and/or an equivalent level 2 certificate in one of the subject areas to qualify. There will also be an opportunity to undertake further GCSE's to enhance your portfolio or improve your grades and will be incorporated around your BTEC subjects.

The pathway includes a wide range of vocational courses in the following areas:

- **Construction**
- **British Safety Council – Health and Safety at Work** (gained through work experience)
- **BTEC Applied Science**
- **BTEC Performing Arts**
- **BTEC Sport, Recreation and Activity Leadership**
- **Coaching and First Aid** (running in conjunction with above)
- **BTEC Travel & Tourism**
- **BTEC Hair and Beauty**
- **BTEC I-Media**
- **National Diploma Graphic Design**
- **BTEC Catering**

These courses are delivered in modular form and are assessed entirely through coursework. This means that students can track progress easily and through informative feedback, are able to improve their work.



Sports Academy

St. Aldhelm's Sports Academy is offering a fantastic new opportunity for talented young sports men and women aged 16 - 19 years who are both committed and motivated to developing their own sports performance. The Sports Academy is co-ordinated and run on a highly professional basis by experienced and qualified coaching staff, delivering a first class sports performance programme.



It offers:

- Professional Coaching
- Academy Kit
- Competitive matches / competitions
- Local adult club links
- Flexible opportunities to study and play
- Fitness Testing and Personal Training Programme
- Opportunity to complete coaching and officiating awards

The Sports Academy offers opportunities in **Basketball, Football, Gymnastics, Trampoline** and **Volleyball**. Other sports are available and will be identified by our young adults' needs and aspirations which can be discussed further with the Sports Academy Director.

Sports Facilities

We have a wide range of sporting facilities on site with several sports halls and outdoor pitches; one of the halls is a fully equipped gymnastics facility with a number of trampolines. We also provide free access to the leisure centre swimming pool, a modern gym and fitness suite, dance floor/aerobics studio and an all-weather fully floodlit pitch.

How does the Sports Academy Work?

The timetable is structured around the academic timetable so that there are 3 or 4 hour sessions per day, amounting to 15 to 20 hours per week. This allows students to study on a full-time academic/vocational course and still attend the Sports Academy sessions without conflict. A typical day would start at 7.00am with a 1 hour sport session, followed by a free breakfast, then BTEC learning time until 11.00am, a further 1 hour sport session followed by lunch and then a final afternoon session after BTEC learning time to finish anytime between 4.00pm and 7.00pm, depending on whether the young adult wishes to do additional sporting/coaching activities.

Coaching

All the Sports Academy Squads are coached by National Governing Body (NGB) qualified coaches with a wealth of sports experience enabling them to get the most out of the players. The Sports Academy Team are committed to providing the highest quality training and coaching to nurture local talent and give the players the best development opportunities possible.

The Sports Academy will provide students with:

- Extended opportunities to participate in a chosen sport
- Specific Sports Qualifications and additional awards
- Regular Coaching Programmes
- Entry into various leagues
- Coach Education - NGB Level 1 and officiating courses
- Partnership with local sports clubs
- Use of local sports facilities
- Membership to Health & Fitness Suite
- Personal Health & Fitness programme
- Sports Injury Clinic
- Use of sports related technology e.g. dartfish and video analysis software

Sports Academy students will receive regular coaching to develop individual skills and fitness in their chosen sport and access to sports injury advice and rehabilitation. Coaching programmes will take place at either St. Aldhelm's Academy or various satellite sports venues delivered by highly qualified and respected coaches across all 5 sports with opportunities to progress to Regional and National Level Squads. A typical example of what could be expected as "progression into employment", would be Sports Recreation Assistant and/or Sports Nutrition at Degree Level (Bournemouth University).

Basketball Squad

From September 2011, Year 12 students attending St. Aldhelm's Academy can become part of the Basketball Squad which is a joint initiative between the Academy and the local National League club, Dorset Storm. The Squad is open to both male and female players who will be able to train every day, during curriculum time, under the guidance of the Sports Academy Director.

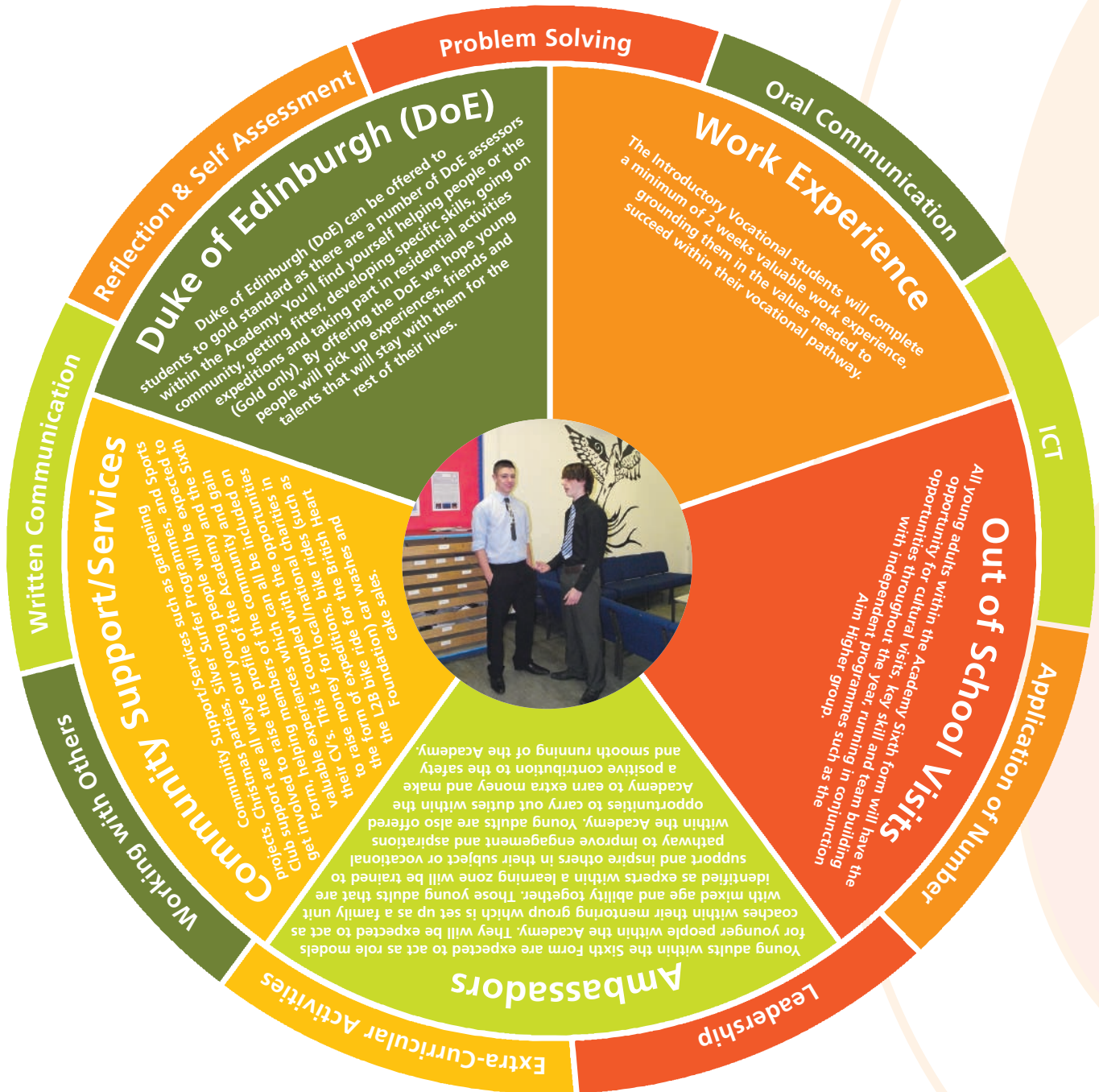
The basketball programme will look to improve personal development, team awareness and physical fitness and agility. This is a serious student athlete programme which will require many sacrifices. It is not an after school programme, it is an arduous basketball programme, to include coaching/referee qualifications. The student will be temporarily withdrawn from the squad should they fall behind academically until they catch up.

The Basketball Squad will initially compete in inter-school competitions and will look to progress to the England Basketball National Leagues. This allows for student athletes to remain with their present clubs and as the training programme will be delivered during curriculum time, it will not clash with the student's club training.

The Sports Academy Director has been involved with British basketball for 30 years; initially as a player in the local league and now as head coach of JP Morgan Chaser's local league men's teams, also refereeing at all levels within the England Basketball National Leagues and is an accredited tutor/mentor up to Level 3, as well as mentoring and assessing the development of all local area basketball officials.

Community Enrichment Programme

St. Aldhelm's Academy Sixth Form focuses strongly toward the enrichment of our young people. We will be offering a variety of opportunities to promote community participation, personal development, team building, work experience, out of school visits and in turn raise confidence and self-belief, improving inter-personal skills and increasing their profile in their social circles, around the Academy and the local community.



Our Specialisms

Sport and Mathematics are our subject specialisms and they create pathways across the curriculum, making links with all subjects. While we offer additional sporting activities in which young adults can participate, sport also aids progress in all subjects and helps:

- improve behaviour and attendance;
- increase motivation for learning;
- boost young adults' self-esteem and confidence;
- encourage young adults to learn to work independently and as a team member;
- develop and improve leadership skills;
- encourage healthier lifestyles.

Mathematics is a very important skill for life and our learning and teaching will ensure that our young adults will:

- develop an enthusiasm and confidence around mathematics;
- understand how mathematics is a skill needed for life by learning through real-life situations;
- be given the opportunity to use and apply the mathematics they learn across all subjects;
- understand its rich historical and cultural roots.

The expertise from Bournemouth University in both our specialisms will be used to enhance and enrich the learning opportunities offered.

Flexible Learning

Here at the Academy we will be offering a flexible learning timetable which will give our young adults the opportunity to work around their personal needs. The young adult will develop their timetable in consultation with their mentor/Sixth Form Champion to ensure that over the 1 or 2 years, all their learning and other needs are met within the number of learning hours they have to complete for the duration of the course.

A curriculum for the 21st century

St. Aldhelm's Academy Sixth Form Curriculum:

- has the young adult at the centre of the provision;
- is personalised for learners, focusing on their greatest needs, aspirations and interests;
- uses time, staffing, space, resources and approaches to learning, teaching and assessment in ways that help each young adult achieve;
- is supported by 21st-century technology that includes wireless broadband, state of the art software and computers, teaching tools and a VLE (Virtual Learning Environment). The VLE can be used in the Academy or at home and includes a dedicated area enabling our young adults to keep up to date with their progress;
- is reviewed regularly to ensure that it is having the desired impact on the young adults and their learning, also that it evolves in response to changes in the young adults' needs and aspirations.

Dress Code

Boys

- Black suit
- White shirt and smart tie
- Black shoes – suitable for the workplace. Trainers are unacceptable except for PE
- Dark socks

Girls

- Black suit – skirt or trousers
- White blouse – plain
- Black shoes – suitable for the workplace and with a maximum heel height of two inches
- Black or natural tights

Sports Kit

- Academy polo shirt
- Academy tracksuit bottoms
- Academy fleece
- Academy shorts – optional
- Trainers

Sixth Form Facilities

- Wireless Broadband for Netbooks
- Private Study Area with ICT support
- Careers Library
- Common Room
- Lockers
- Tea, coffee and soft drink facilities
- Snack Bar
- Table Tennis
- Free access to Leisure Centre
- Preferential driving lesson rates

Next steps

Once you've read the prospectus, talk to your mentor or parent about what interests you. Then attend one of the Open Evenings to talk to staff about their subjects and collect some information leaflets to add to your folder. Look at the course requirements, your current attainment and predicted grades, and discuss with your teachers how to meet the levels needed to access your pathway. Also talk to the Sixth Formers about studying in Years 12 and 13.

When you've decided on the pathway for you, fill out the application form and hand it in to our Admissions Team at Reception or deliver it by post. Our deadline for applications is February 25th 2011.

Your application indicates a preference which may be changed following your exam results.

As soon as the application has been received it will be reviewed by the Sixth Form Team and you will be called for an interview. A letter will be sent following the interview offering a conditional placement.

At any stage of your transition you can contact our Transitions and Vocational Co-Ordinators or any of the Sixth Form Team about your chosen courses or any queries you may have.

On receipt of your acceptance letter you need to attend the Sixth Form Induction Day in July/August 2011 (a letter will be sent nearer the time) where you can purchase your subsidised Netbook.

How to find us

St. Aldhelm's Academy is located on the outskirts of the town of Poole in Dorset. Poole is a thriving commercial centre and channel port and is famous for its large harbour and attractive beaches. Bournemouth is only a few miles from the Academy and Christchurch is also within easy commuting distance. The town is also close to the beautiful countryside of Dorset and the New Forest National Park. The Academy can be reached as follows:

By Bus

Wilts and Dorset bus service Routes 14 and 16 from Poole or Bournemouth Bus Stations - details of routes can be found on www.wdbus.co.uk

Yellow Buses Route 26 from Poole Station or Bournemouth - details of routes can be found on www.yellowbuses.co.uk

By Car

St. Aldhelm's Academy is approximately 3 miles from Poole town centre. Herbert Avenue can be found off the B3068 Ringwood Road which is the main road into Poole.

By Rail

The 3 Railway Stations nearby are Poole, Branksome and Parkstone - details can be found on www.nationalrail.co.uk

Map

Link to Multimap - <http://www.multimap.com/s/C5vVrPxX>





St. Aldhelm's Academy

Herbert Avenue Poole Dorset BH12 4HS

Principal Cheryl Heron

Sixth Form Champion Chris Fellows

Telephone 01202 732500

Email office@staldhelmsacademy.org

Web address www.staldhelmsacademy.org

Our sponsors:



Our specialisms:



A company limited by Guarantee, registered in England and Wales Company no. 06959707.
Registered Office: The St. Aldhelm's Academy, DEC, Devizes Road, Salisbury, SP2 9LY
Registered with the Charity Commissioners for England and Wales, Charity no. 1135164.

Printed by Marquee Print 01202 769077 www.marqueeprint.com